



## Regional Industrial Distribution/Manufacturing Facility

**111 MOSHER STREET**

Holyoke, MA 01040

Presented By:

**Kevin Jennings**

413.731.7770

kevin@jennings-re.com

**Jonathan Little**

413.731.7770 x102

jonathan@jennings-re.com



73 Chestnut Street Springfield, MA 01103

**JENNINGS-RE.COM**



# REGIONAL INDUSTRIAL DISTRIBUTION/MANUFACTURING FACILITY

111 Mosher Street Holyoke, MA 01040

## Executive Summary



### OFFERING SUMMARY - FOR LEASE

Lease Price:	Call for Details
Building Size:	113,700 sf Main Building 1,600 sf Outbuilding
Lot Size:	9.77 Acres
2025 Real Estate Taxes:	\$98,608
Year Built:	1987
Zoning:	IG- General Industry
Roof:	New 2023
Life Safety Systems:	2023 Upgrade

### PROPERTY OVERVIEW

Under new ownership with significant recent improvements, 111 Mosher Street consists of an approximate 113,700 square foot industrial facility with 1,600 sf outbuilding located on 9.77 acres in Holyoke, MA. The building features 22' ceiling height, 12 loading docks, and a 10'x14' grade level drive-in door. The facility benefits from heavy utility infrastructure with a large natural gas service entering the building and a 4,000 amp 208/480V & 120/208V, 3 Phase electrical service which is well distributed throughout. Holyoke's close proximity to the interstate highway system creates a unique opportunity for regional distribution and manufacturing firms servicing the New England and New York regions. An adjacent rail line provides opportunity for rail service through Pioneer Valley Railroad directly onto the property. \*Sub dividable to 50,000 sf, 63,700 sf, or 80,700 sf

Presented By:

**Kevin Jennings**

413.731.7770

kevin@jennings-re.com

**Jonathan Little**

413.731.7770 x102

jonathan@jennings-re.com



73 Chestnut Street Springfield, MA 01103

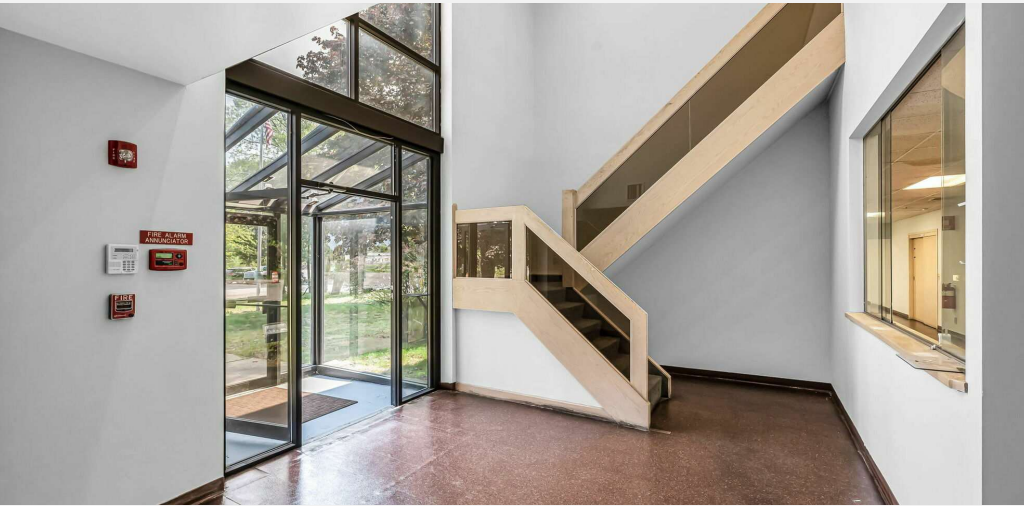
jennings-re.com

The information herein is from sources deemed reliable but no warranty of representation is made to the accuracy thereof. Offering is subject to errors and omissions as well as prior sale, change or withdrawal without notice.

# REGIONAL INDUSTRIAL DISTRIBUTION/MANUFACTURING FACILITY

111 Mosher Street Holyoke, MA 01040

Office



Presented By:

**Kevin Jennings**

413.731.7770

kevin@jennings-re.com

**Jonathan Little**

413.731.7770 x102

jonathan@jennings-re.com

The information herein is from sources deemed reliable but no warranty of representation is made to the accuracy thereof. Offering is subject to errors and omissions as well as prior sale, change or withdrawal without notice.



73 Chestnut Street Springfield, MA 01103

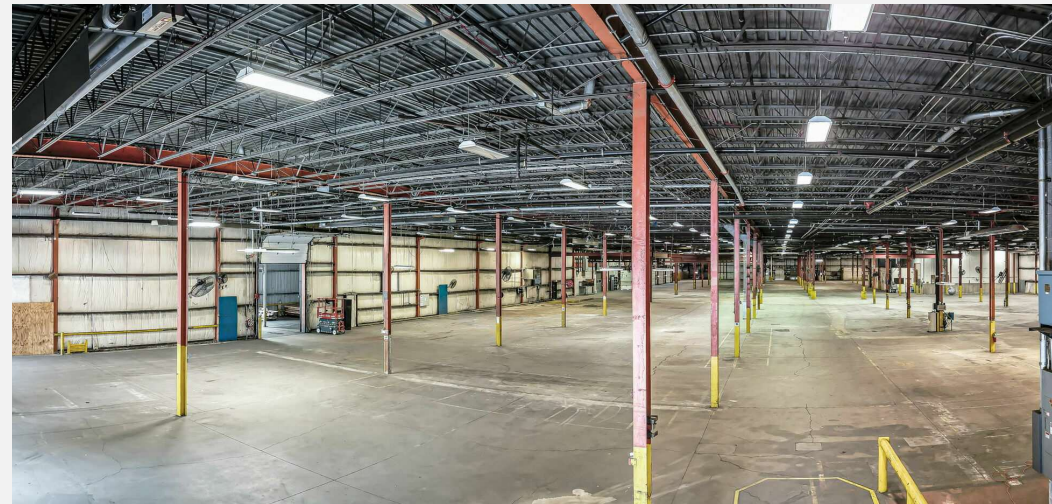
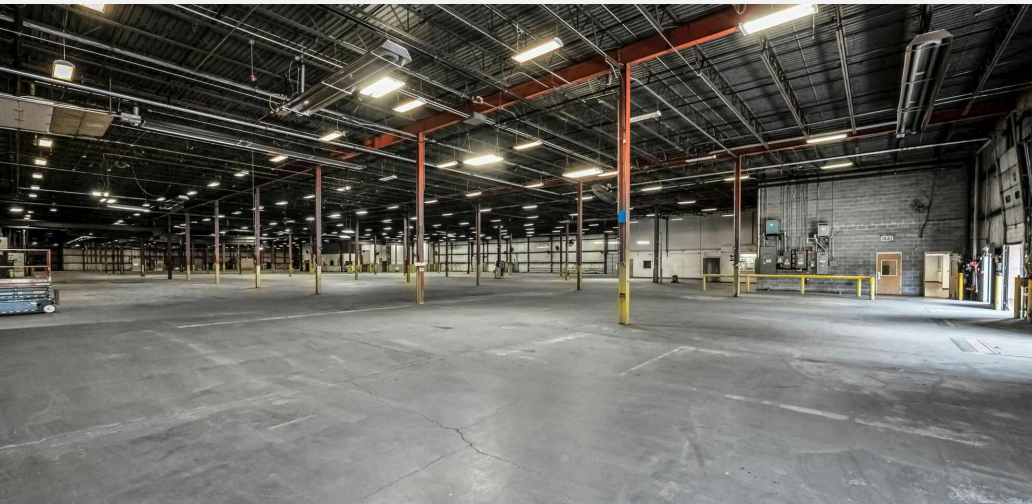
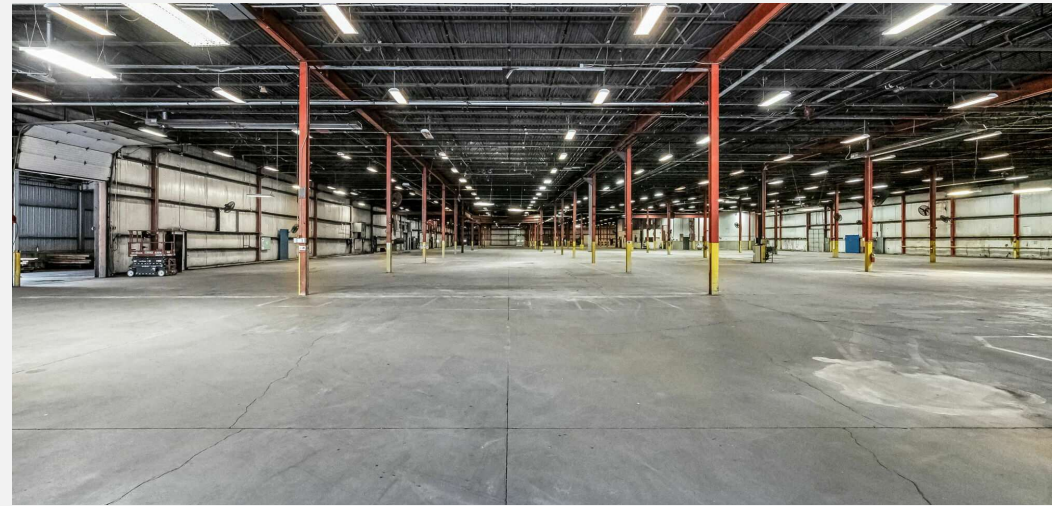
jennings-re.com



# REGIONAL INDUSTRIAL DISTRIBUTION/MANUFACTURING FACILITY

111 Mosher Street Holyoke, MA 01040

Warehouse/Manufacturing



Presented By:

**Kevin Jennings**

413.731.7770

kevin@jennings-re.com

**Jonathan Little**

413.731.7770 x102

jonathan@jennings-re.com

The information herein is from sources deemed reliable but no warranty of representation is made to the accuracy thereof. Offering is subject to errors and omissions as well as prior sale, change or withdrawal without notice.



73 Chestnut Street Springfield, MA 01103

jennings-re.com



# REGIONAL INDUSTRIAL DISTRIBUTION/MANUFACTURING FACILITY

111 Mosher Street Holyoke, MA 01040

Site Map



Imagery ©2025 Airbus,  
Maxar Technologies

Presented By:

**Kevin Jennings**

413.731.7770

kevin@jennings-re.com

**Jonathan Little**

413.731.7770 x102

jonathan@jennings-re.com



73 Chestnut Street Springfield, MA 01103

jennings-re.com

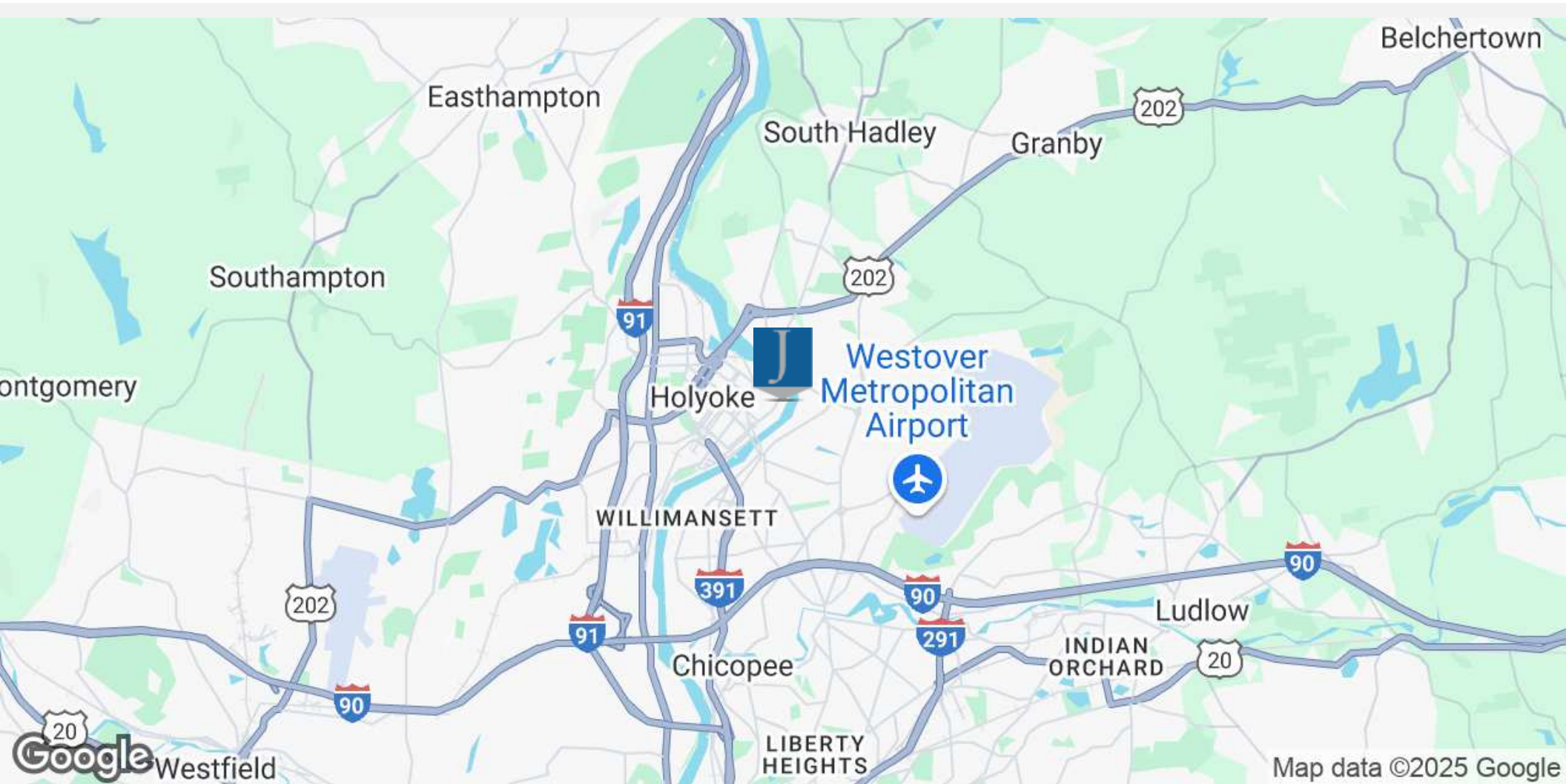
The information herein is from sources deemed reliable but no warranty of representation is made to the accuracy thereof. Offering is subject to errors and omissions as well as prior sale, change or withdrawal without notice.



# REGIONAL INDUSTRIAL DISTRIBUTION/MANUFACTURING FACILITY

111 Mosher Street Holyoke, MA 01040

Location Map



Presented By:

**Kevin Jennings**

413.731.7770

kevin@jennings-re.com

**Jonathan Little**

413.731.7770 x102

jonathan@jennings-re.com



73 Chestnut Street Springfield, MA 01103

jennings-re.com

The information herein is from sources deemed reliable but no warranty of representation is made to the accuracy thereof. Offering is subject to errors and omissions as well as prior sale, change or withdrawal without notice.

# REGIONAL INDUSTRIAL DISTRIBUTION/MANUFACTURING FACILITY

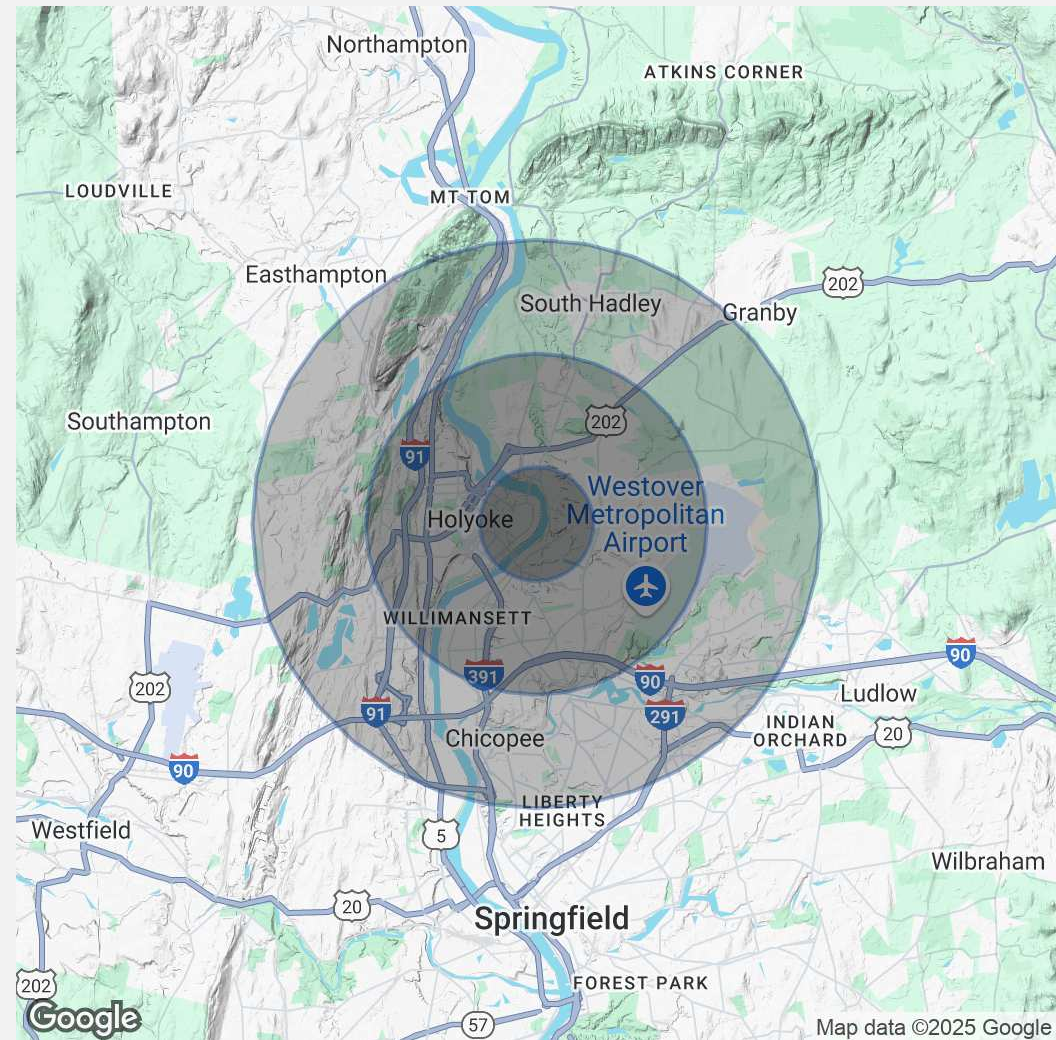
111 Mosher Street Holyoke, MA 01040

## Demographics Map & Report

POPULATION	1 MILE	3 MILES	5 MILES
Total Population	11,797	77,454	153,720
Average Age	36.1	37.7	38.2
Average Age (Male)	36.1	35.0	37.1
Average Age (Female)	36.4	39.9	40.0

HOUSEHOLDS & INCOME	1 MILE	3 MILES	5 MILES
Total Households	4,933	32,524	62,900
# of Persons per HH	2.4	2.4	2.4
Average HH Income	\$42,905	\$48,809	\$51,500
Average House Value	\$240,130	\$197,904	\$196,758

*\* Demographic data derived from 2020 ACS - US Census*



Presented By:

**Kevin Jennings**

413.731.7770

kevin@jennings-re.com

**Jonathan Little**

413.731.7770 x102

jonathan@jennings-re.com



73 Chestnut Street Springfield, MA 01103

jennings-re.com

The information herein is from sources deemed reliable but no warranty of representation is made to the accuracy thereof. Offering is subject to errors and omissions as well as prior sale, change or withdrawal without notice.

J



73 Chestnut Street Springfield, MA 01103

[jennings-re.com](http://jennings-re.com)